

# Polygonal Paper

---

## Instructions

on gluing the fox out of paper





# Author's note

Thank you for purchasing the files for making the fox!

You will need about 20 hours on gluing it. The size of ready model is: 600 mm \* 510 mm \* 810 mm.

It is better if you have the skills of working with paper, but you can make a model, even if you have never done anything like this. In the first place, the result will depend on your attentiveness and exactitude.

Video tutorial: <https://youtu.be/Y63wporZrkE>

I put a lot of effort into creating this model. It is forbidden to use any materials for the purpose of making profit, and also to share them.



## Natalya Bublik

✉ [bubliknata@gmail.com](mailto:bubliknata@gmail.com)

vk <https://vk.com/bubliknata>

f <https://www.facebook.com/natalya.bublik>

ig [https://www.instagram.com/polygonal\\_paper/](https://www.instagram.com/polygonal_paper/)

Be <https://www.behance.net/bublik>



# You will need for work



---

## A cutter.

You can use any cutter for paper.



---

## A ruler.

It's better to use the metal ruler, because this material is difficult to cut by cutter.



---

## Glue.

Which does not deform the paper. Note that most of the PVA glues dries for a long time, and the paper gets wet from them, and then deformed. I like to use UHU glue for paper.



---

## A surface for the cutting.

You can use a piece of old linoleum, or a glass panel, or a clean cutting board.



---

## Template.

Printed on paper weights 250-300 gr. / sq.m. If you have the opportunity, print the template for A3 paper size. If it is not possible, print a file for A4 paper, there is the same scheme, but divided into small parts. Please, do not use office paper (80-90 gr./ sq.m.). This paper is too thin. You can use aquarelle paper. This paper has a light texture, thanks to this gluing places of the finished model is almost unnoticeable.

If you want get a colored model like on the photo on the first page, you will need orange paper, white paper and black permanent marker.. On each page of the template it is written what would be the color of details are on it. Print pages with black details and white details on white sheets of paper, another pages print on orange paper. Paint the black details by the marker on the front side after they are cut and bent.



# Work sequence

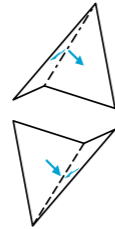
## Cutting.

Cut out all the details of the template along the solid line.

You will get the best result if you will cut the paper with a cutter by ruler. Please do not use scissors, because they can make dents on the paper in the turning places.

## Folding.

Carefully score (but do not cut through) the paper along the dotted and dashed-dotted lines. This is necessary to make the folding of the paper in these place easier.



The dash-dotted lines denote folding of the paper to the outside (there are diverging arrows in this places);

The dotted lines appear in the places where the edges of the paper must be folded over to the inside (this movement is indicated by converging arrows).

Now you can fold all details along the lines.

## Gluing.

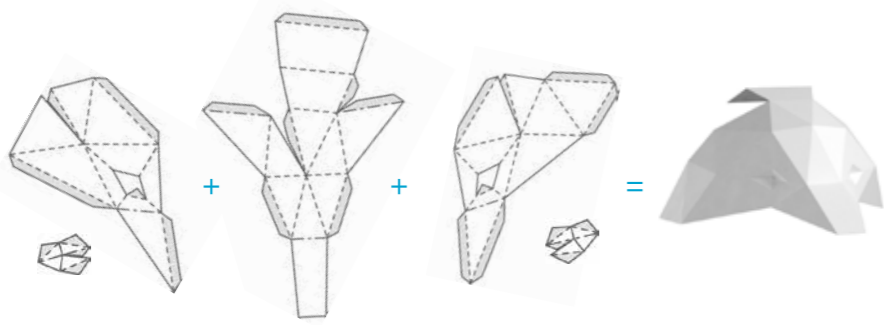
The workplace have to be clean. If you stained your hands with glue, first wash them, then continue the assembly.

If necessary, before gluing paint the marked parts with a black marker on the front side.

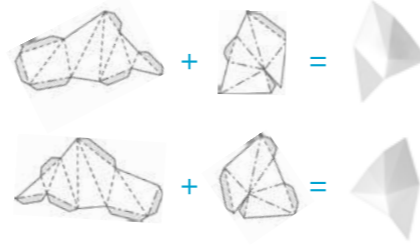
The side of the paper with lines is the inner side of the model. The edges which should be glued together are denoted by the same numerals. For convenience, there are flaps for glue on the template (marked in gray). On A3 template start gluing together the edges from numbers «1», then «2», etc. On A4 sheets of paper, the numbering starts from the number «-17».



01



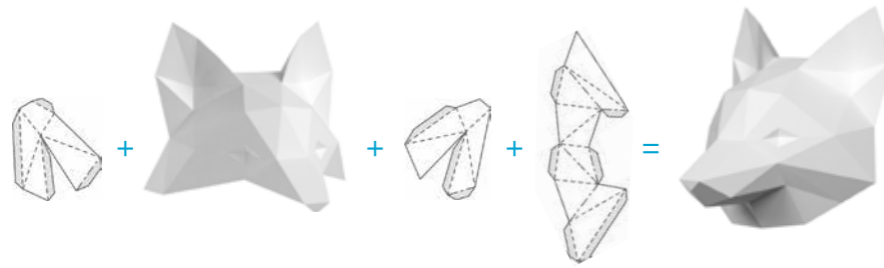
02



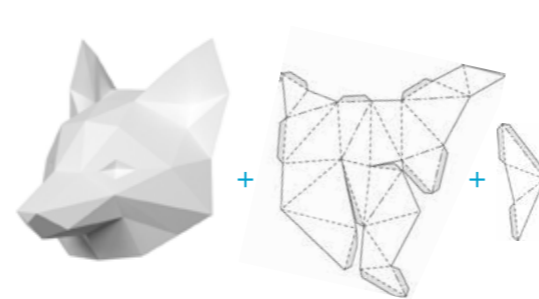
03



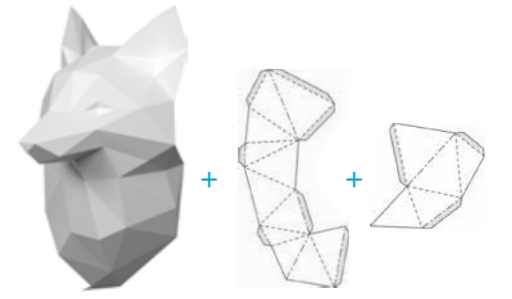
04



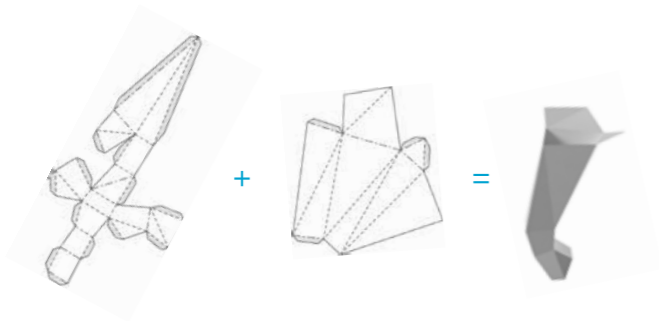
05



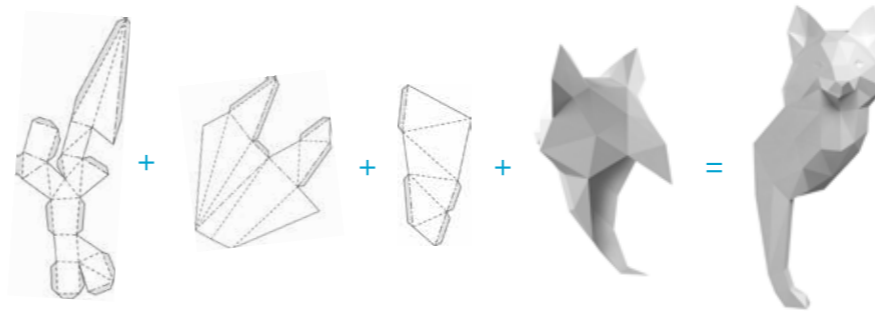
06



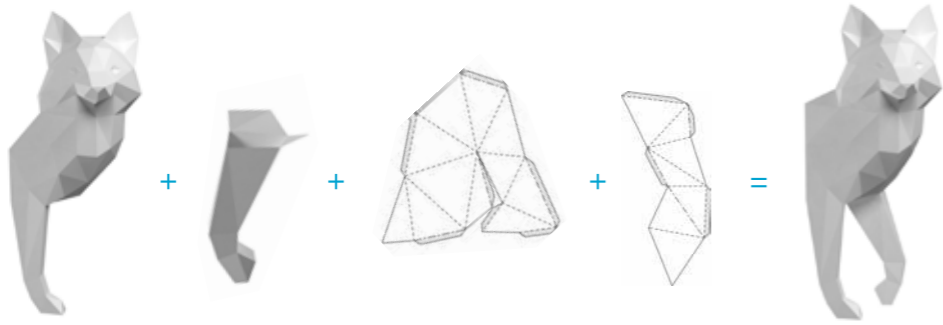
07



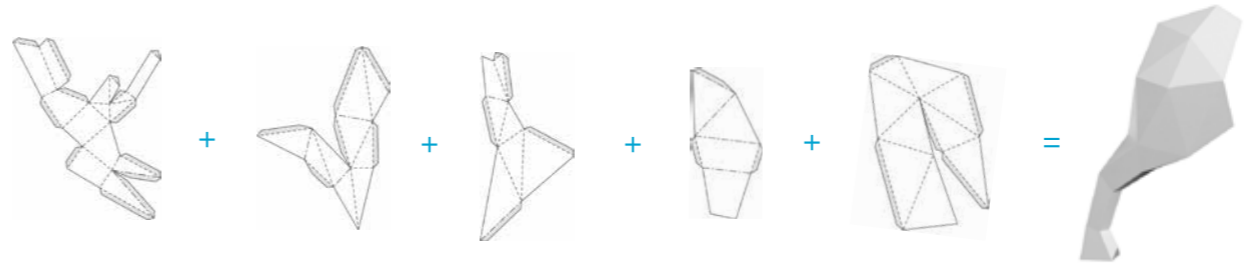
08



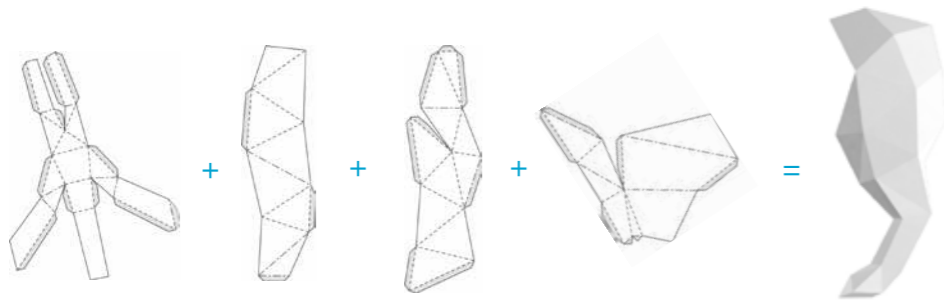
09



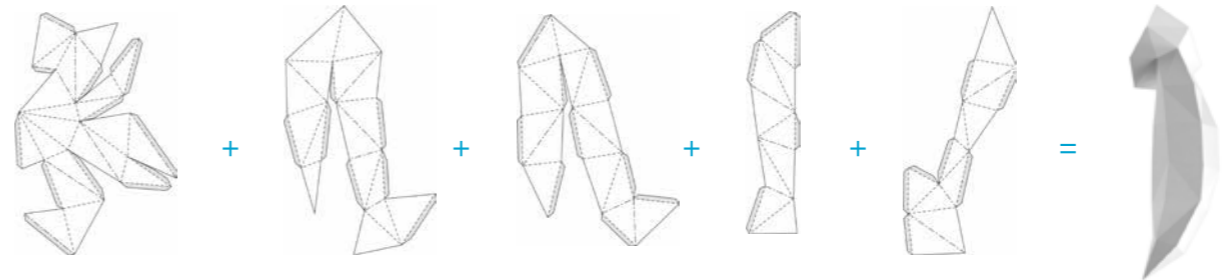
10



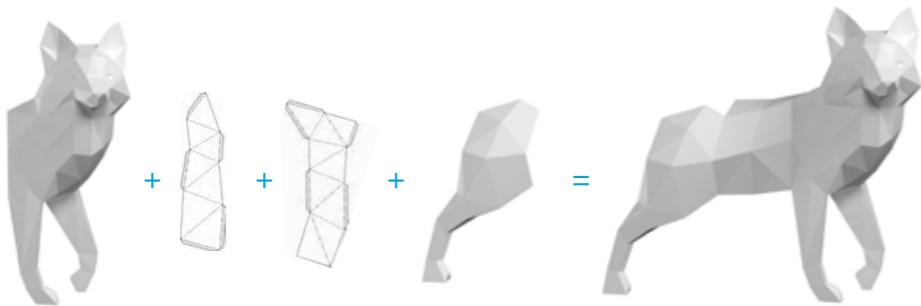
11



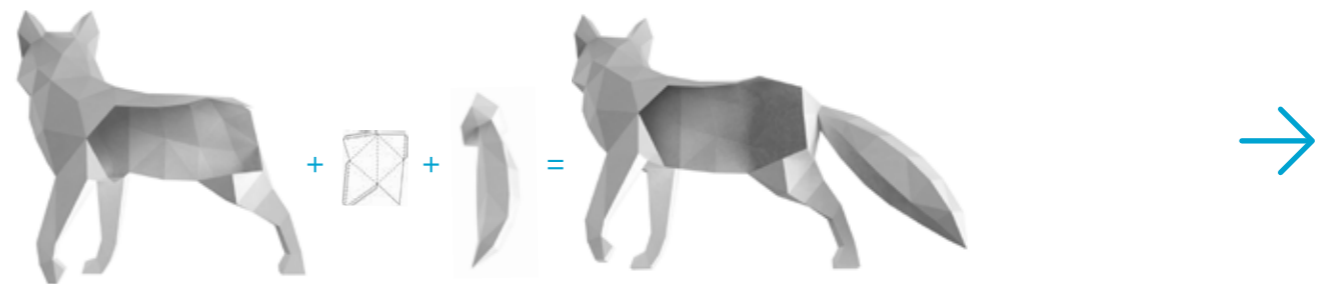
12

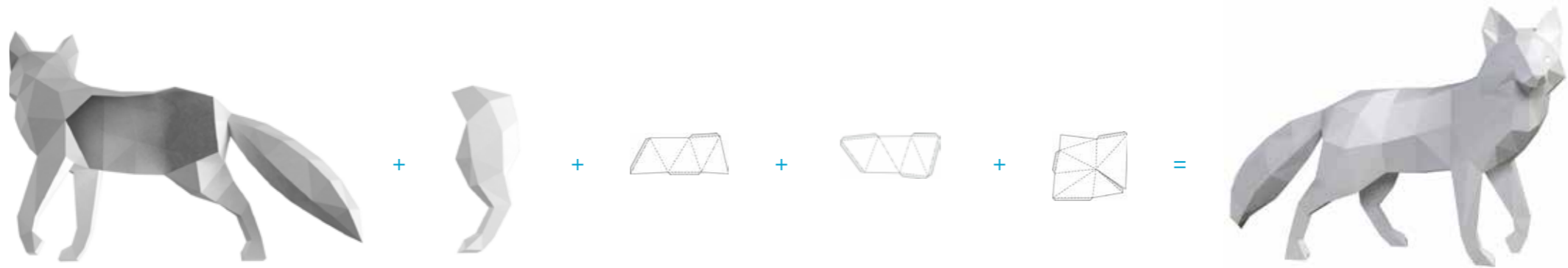


13



14





**Thank you!**