

Polygonal Paper

Instructions

on gluing paper wolf head from paper
The final size: 39 cm * 31 cm * 32 cm





Author's note

We designed this model specifically to demonstrate how simple and convenient our templates for assembling trophies from paper. Assembling the model is an exciting activity that does not require special skills; only your attentiveness and accuracy are needed.

Video tutorial where we make the model in such technique:

<https://www.vimeo.com/290165112>

Both our 2D templates and 3D Models designs are protected by copyright law, and are intended for personal use only. Please don't share or steal the models or templates – there was a lot of work involved in creating them.



Designers of Polygonal Paper

✉ info@polygonalpaper.com

vk <https://vk.com/polygonalpaper>

f <https://www.facebook.com/polygonalpaper/>

📷 <https://www.instagram.com/polygonalpaper/>

Bē <https://www.behance.net/polygonalpaper>



You will need for work



A cutter.

You can use any cutter for paper. If you do not have a cutter, you can buy the cheapest one.



A ruler.

It will be better if you will use the metal ruler, because you may accidentally cut the ruler of a different material.



Glue.

Which does not deform the paper. Note that most of the PVA glues deform the paper. If you will make the model using this glue it will not bring to you any pleasure, because the PVA glue dries for a long time, and the paper gets wet from him, and then deformed. Lately I use a glue UHU for paper.



A surface for cutting.

You can use a piece of old linoleum, or a glass panel, or a clean cutting board.



Template.

A flat (unfolded 2d pattern), printed on paper weights 180-230 gr. / sq.m. Please, do not use office paper (80-90 gr./sq.m.). This paper is too thin. You will get the best result if you use aquarelle or pastel paper. This paper has a light texture, thanks to this gluing places of the finished model is almost unnoticeable.

We offer to print 3 sheets on light paper, and 6 sheets on gray paper, for this we prepared two files. So will a wolf with a color close to natural. You can print both files on paper of the same color if you want a monochrome model.



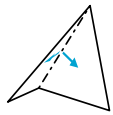
Work sequence

Cutting the template.

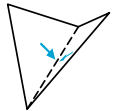
Cut out all details of the template along the contour indicated with a solid line. You will get the best result if you cut the paper with a cutter and a ruler. It is better not to use scissors, because they can make dents on the paper in the places of intersection of lines.

Folding.

Carefully score – but do not cut through – the paper along the dotted and dashed-dotted lines. This is necessary to make the folding in these places easier.



The dash-dotted lines mean folding the paper to the outside: there are diverging arrows in these places;



The dotted lines appear in the places where the edges of the paper must be folded over to the inside (indicated by converging arrows).
Now you can fold all details along the lines.

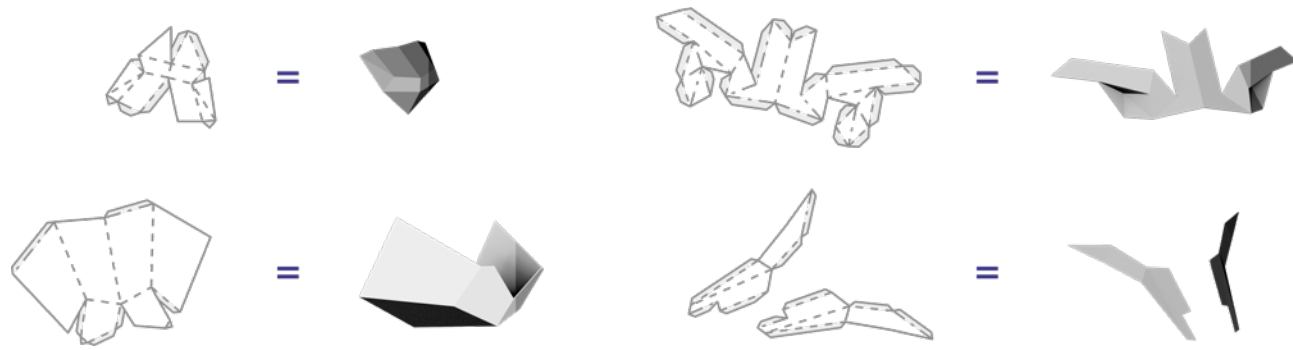
Gluing.

The side of the paper with lines is the inner side of the model. The edges that should be glued together are marked with the same numbers. For convenience, there are flaps on the unfolded 2d pattern (marked in gray). Start gluing together the edges from numbers «1», then «2», etc. The numbers in the rectangle mean that in this place there are two different parts that should be glued together. If the number is not circled, then it is necessary to search for the corresponding number on the same detail.

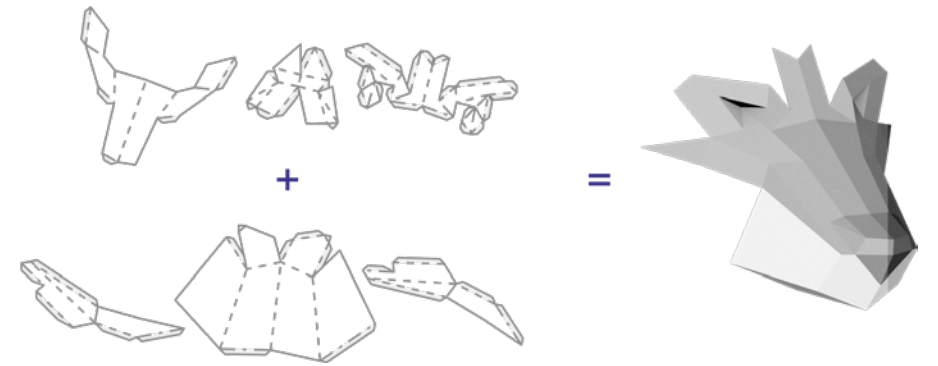
If during the assembly you accidentally stained your hands with glue, first wash your hands, and then continue the assembly so as not to dirty the model from the front side.



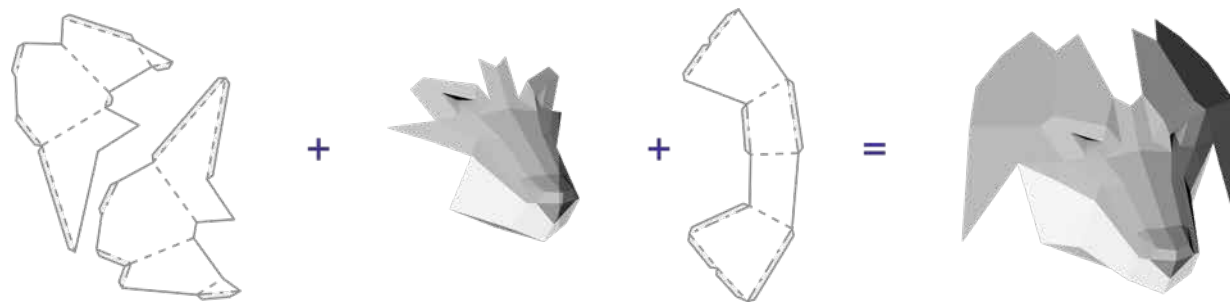
01



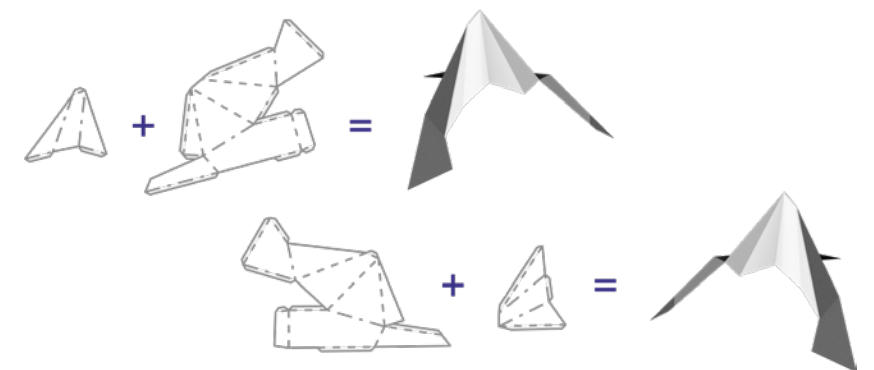
02



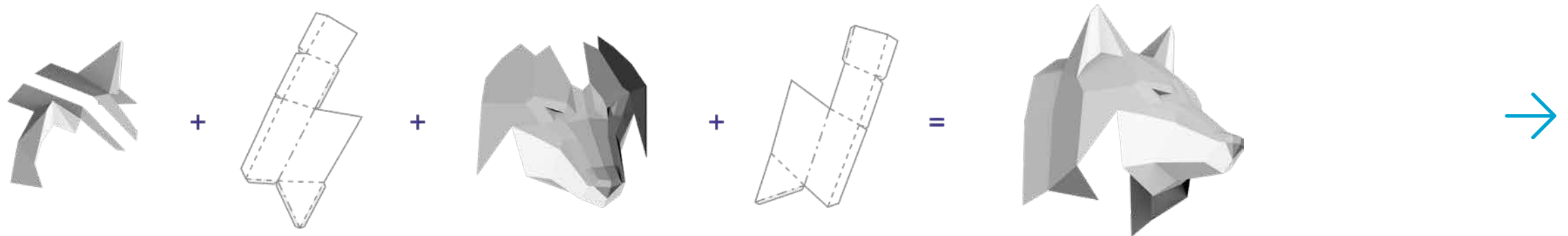
03



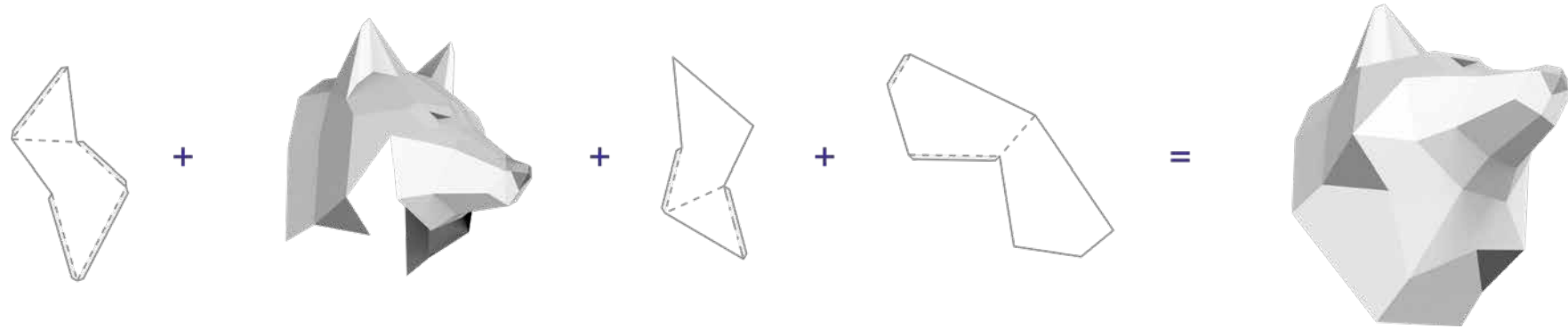
04



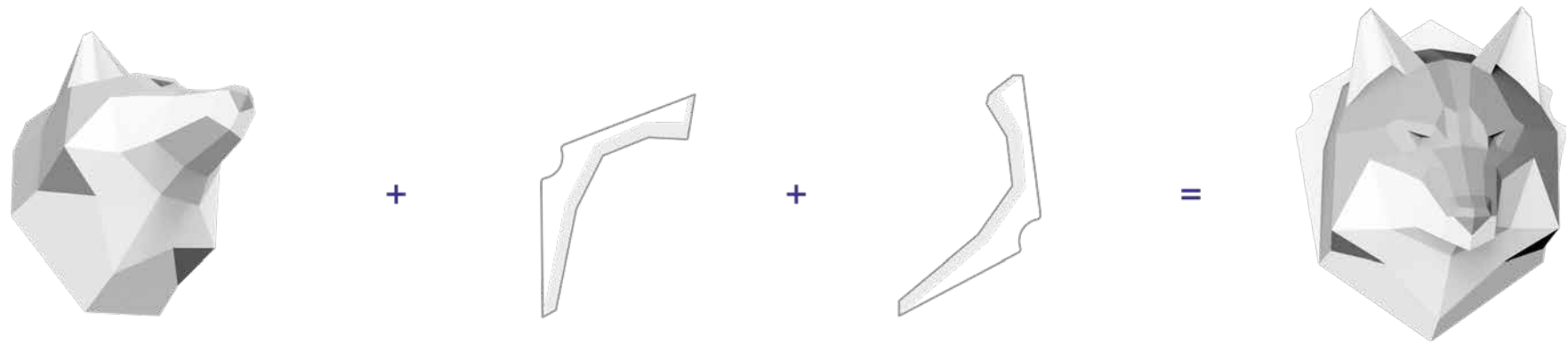
05



06



07





Thank you!